



# GMT MONTHLY MEMBERSHIP PROGRESS REPORT

Results as of: 6/30/2020

Multiple District 27

LOCATION: WISCONSIN

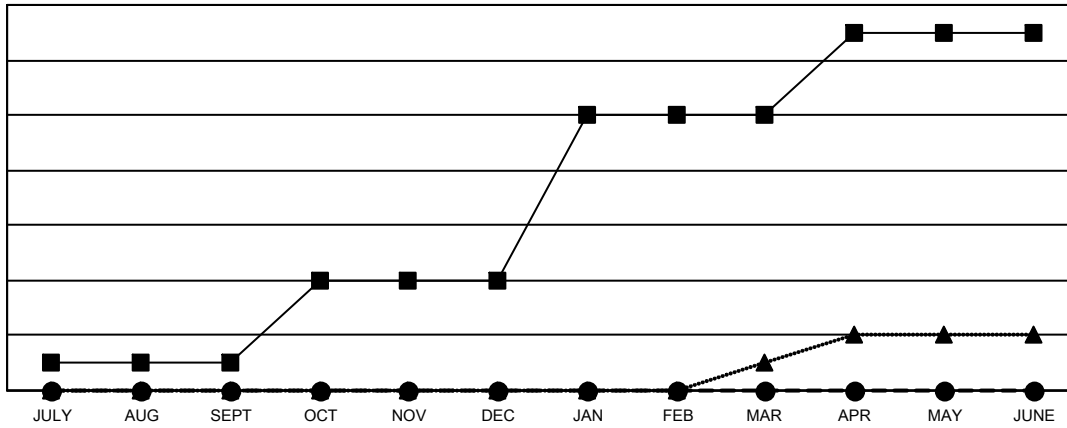
GMT: OPEN

GMT CA 1

Clubs			
RESULTS FOR 2019-2020			
QUARTER	NEW CLUB GOAL	NEW CLUBS	DROPPED CLUBS
JULY/AUG/SEPT	1	0	0
OCT/NOV/DEC	3	0	1
JAN/FEB/MAR	6	0	2
APR/MAY/JUNE	3	0	3

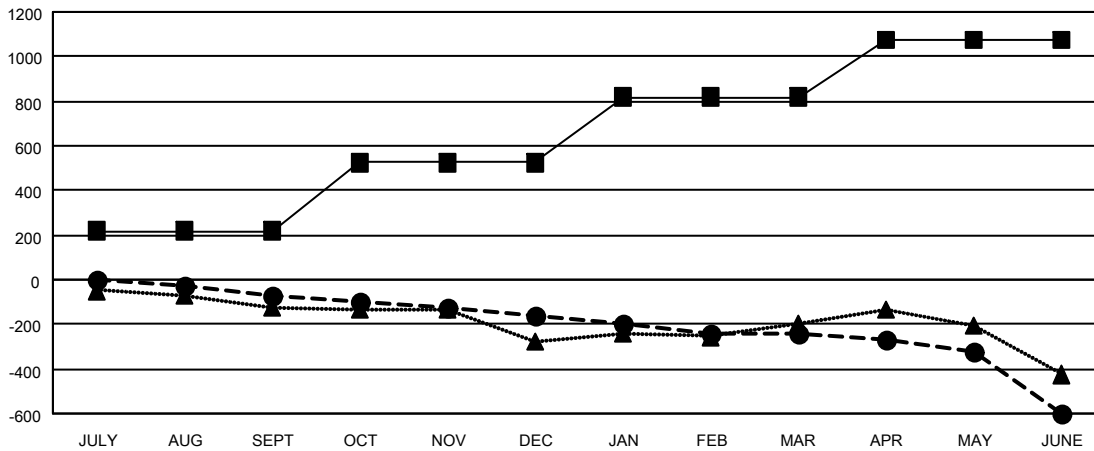
Members			
RESULTS FOR 2019-2020			
QUARTER	MEMBER GROWTH NET GOAL	MEMBER GROWTH ACTUAL	DROPPED MEMBERS ACTUAL (including transfers)
JULY/AUG/SEPT	219	362	401
OCT/NOV/DEC	305	336	409
JAN/FEB/MAR	295	328	370
APR/MAY/JUNE	258	161	486

GOALS AND ACTUAL NEW CLUBS CUMULATIVE



- - CURRENT YEAR GOALS FOR NEW CLUBS
- - CURRENT YEAR ACTUAL NEW CLUBS
- ▲ - LAST YEAR ACTUAL NEW CLUBS

GOALS AND ACTUAL MEMBERS CUMULATIVE



- - MEMBER GROWTH NET GOAL
- - MEMBER GROWTH ACTUAL
- ▲ - LAST YEAR MEMBERSHIP ACTUAL

DROPPED CLUBS: 6	
<b>DROPPED MEMBERS</b>	
DECEASED	237
CLUB CANCELLED	32
OTHER	1,396
<b>TOTAL</b>	<b>1,665</b>

331 CLUBS OF 515 ADDED 1 OR MORE NEW MEMBERS

[CLICK HERE FOR CUMULATIVE MEMBERSHIP DATA](#)

<b>GENDER DISTRIBUTION</b>	
MALE	12,777 (75.86%)
FEMALE	4,065 (24.14%)
TOTAL FAMILY UNIT MEMBERS	3,353
FAMILY MEMBERS PAYING HALF DUES	1,707